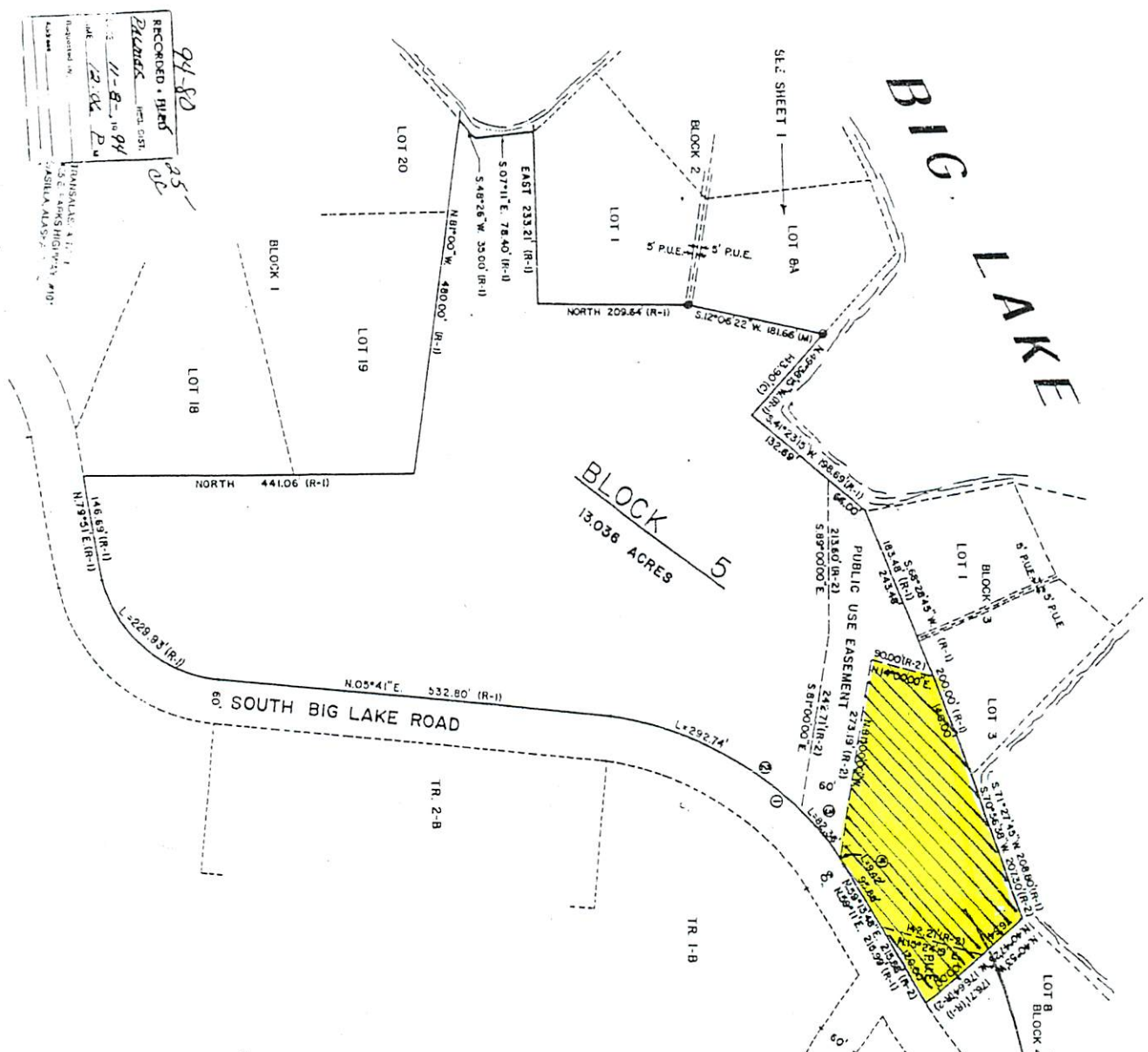


BIG LAKE



94-80
RECORDED - 11/25
PLAT FILE NO. 88-4
11-8-10 94
22.00 P.M.
JANUARY 1, 1994
S.E. & S.W. QUARTERS
SECTION 36, T. 17 N., R. 4 W.,
SARASOTA COUNTY, FLORIDA

BLOCK 5
13.036 ACRES

4379
LOT 8-A, BLOCK 2,
SOUTH BIG LAKE ALASKA
SUBDIVISION

CURVE DATA

NO.	DELTA	RADIUS	LENGTH	CHORD	TANG.	CHORD BRG.
(R-1) 1	53° 28' 54"	411.97'	314.87'	370.85'	207.85'	N31° 28' 00" E
(R-2) 1	53° 28' 58"	411.97'	314.51'	370.71'	207.85'	N32° 28' 00" E
(R-2) 2	40° 42' 26"	411.97'	212.74'	718.82'	193.88'	N28° 03' 00" E
(R-2) 3	11° 27' 14"	411.97'	102.34'	92.22'	41.32'	N6° 08' 03" E
(R-2) 4	1° 18' 58"	411.97'	3.42'	9.42'	4.71'	N89° 31' 00" E

LEGEND

- (R-1) - RECORD BEARINGS AND DISTANCES SHOWN ON SOUTH BIG LAKE ALASKA SUBDIVISION (PLAT FILE NO. 88-4)
- (R-2) - RECORD BEARINGS AND DISTANCES SHOWN ON PUBLIC USE EASEMENT ON BLOCK 5, SOUTH BIG LAKE ALASKA SUBDIVISION (PLAT FILE NO. 82-50)
- MEAS - BEARINGS AND DISTANCES DETERMINED THIS SURVEY
- C - CALCULATED DATA DETERMINED THIS SURVEY.

NOTES

- SEE LEGEND ON SHEET 1 FOR CORNERS SET THIS SURVEY
- EXCEPT FOR THE MEASURED INFORMATION ON THE COMMON LINE BETWEEN LOT 8-A, BLOCK 2 AND BLOCK 8, ALL OF THE BEARINGS AND DISTANCES SHOWN ARE RECORD INFORMATION AS NOTED IN THE LEGEND.

SCALE: 1" = 100'
SURVEYED: OCTOBER, 1993
SHEET 2 OF 2
CAMPBELL SURVEYING
Harry M. Campbell Jr., L.S.
P.O. Box 55945
(907) 745-4157

ExH "A" (Supplement)